

A nighttime photograph of the Washington Monument in Washington, D.C., illuminated and reflected in the reflecting pool. The monument is a tall, white, obelisk-shaped structure. The pool is a large, rectangular body of water that perfectly reflects the monument and the surrounding trees and lights. The sky is dark, and the overall scene is lit with a warm, orange glow from the city lights.

TekMasters

Capabilities Briefing

Ramzy Megally
CEO

IT Cadre for the IC

Zero failure. Mission driven.



- Capabilities-based mission oriented professional IT support.
- We work and solve the problems most outfits turn away from.
- Investing in academic and field staff longevity and proficiency.
- “Easy button” to contract and perform task-order work.
- “Zero Failure” guarantee.

At a glance:

- Founded in 2007
- \$17M ARR Small Business
- 100+ Employees
- 20+ Programs



App.
Development



AWS /AZURE
SMEs



IT
SYS ENG.



Data
Forensics



Mission
Operations



Learning
Development

IT Cadre for the IC

Values and Mission

Commitment

Readiness

Camaraderie

Professionalism

To be the Tier 1 “go-to” IT cadre for the IC, by sustaining a foundry of SMEs that consistently and effectively resolves the missions and challenges that are too complex or too difficult for others.



At a glance:

- Founded in 2007
- \$17M ARR Small Business
- 100+ Employees
- 20+ Programs



App.
Development



AWS /AZURE
SMEs



IT
SYS ENG.



Data
Forensics



Mission
Operations



Learning
Development

Advanced Data Solutions

Rapid support forensics

- Connect disparate data sources and formats immediately.
- Process terabytes of multimedia assets for quick search and analysis
- Extract and embed metadata for manual or AI driven mission analysis on the fly.
- Advanced data analysis capabilities through patented universal data-layer connector.

enCapsa



At a glance:

- Founded in 2007
- \$17M ARR Small Business
- 100+ Employees
- 20+ Programs



App.
Development



AWS /AZURE
SMEs



IT
SYS ENG.



Data
Forensics



Mission
Operations



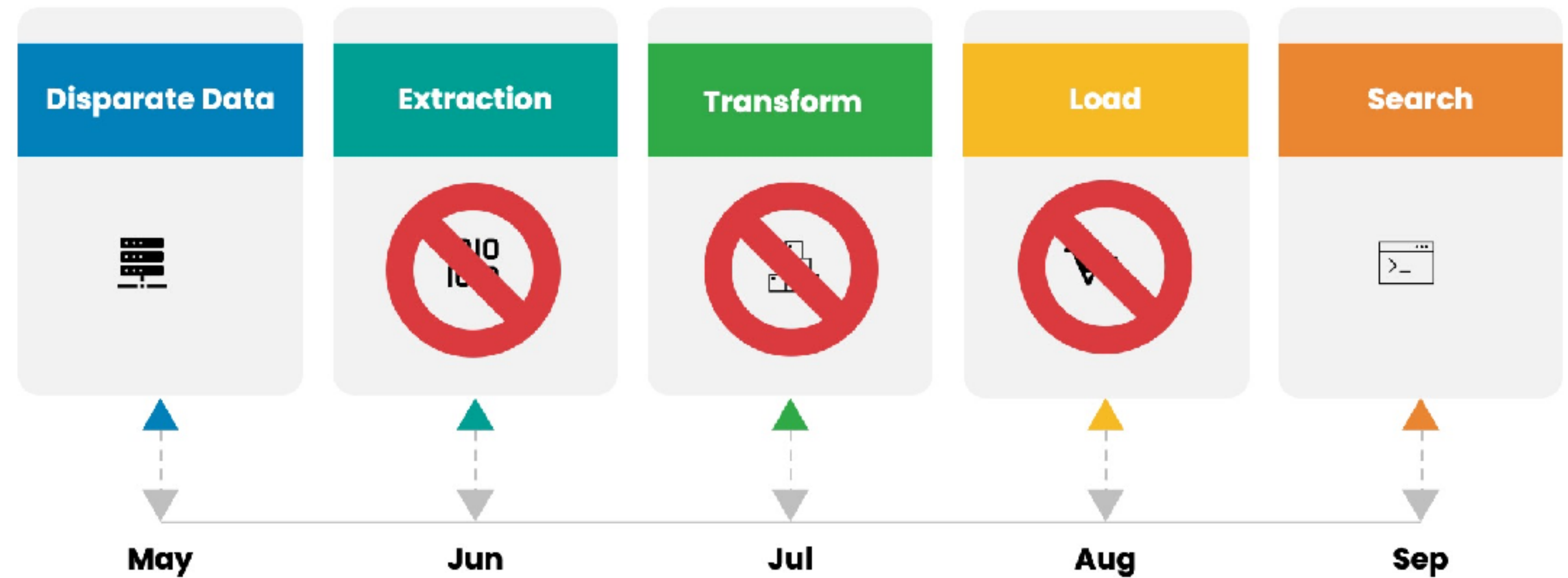
Learning
Development

Advanced Data Solutions

enCapsa - what does it do?



Creates a unitary pool of global data that can be easily searched, analyzed and presented without having to wait for ETL and other traditional methods of data aggregation to be implemented.



enCapsa

Bypass the wait to implement ETL, and get to search and analysis phases 80% faster.

Advanced Data Solutions

enCapsa - how does it do it?

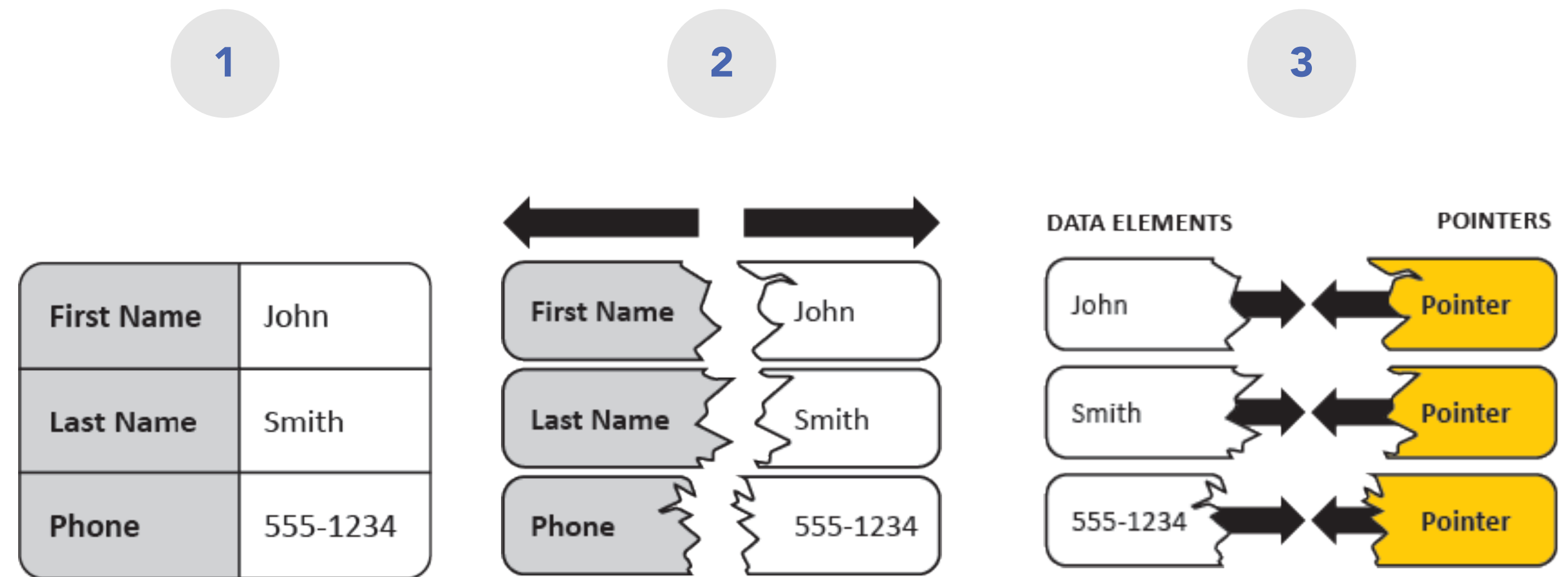


enCapsa separates the data from its classical “row/column” structure.

It then attaches pointers to each original data element creating a “digital stem cell” (DSC).

This creates a uniform set of data from disparate sources.

enCapsa



By changing and normalizing the data schema using DSC's, enCapsa helps to hide the data from hackers and make it faster to process via BI.

Advanced Data Solutions

enCapsa - key benefits



1. Connect and analyze disparate data sources immediately, completely eliminating the ETL process until, and if it is needed.
2. Normalize disparate data sources into a unified data lake, and make it nearly impossible for hackers and enemies to use the data.
3. Reduce by **8X** storage and compute processing power bills for data in the enCapsa data lake.

SPEED - SECURITY - COST SAVINGS

enCapsa

Advanced “Zero Trust” Solutions

Rapid support forensics

- Advanced single action MFA using behavioral biometrics.
- Credentials can't be shared or stolen by man or machine.
- No additional hardware or special training.
- Authentications are PII free for ease of handling and management.
- Better than 192 billion to 1 odds to defeat.



At a glance:

- Founded in 2007
- \$17M ARR Small Business
- 100+ Employees
- 20+ Programs



App.
Development



AWS /AZURE
SMEs



IT
SYS ENG.



Data
Forensics



Mission
Operations



Learning
Development

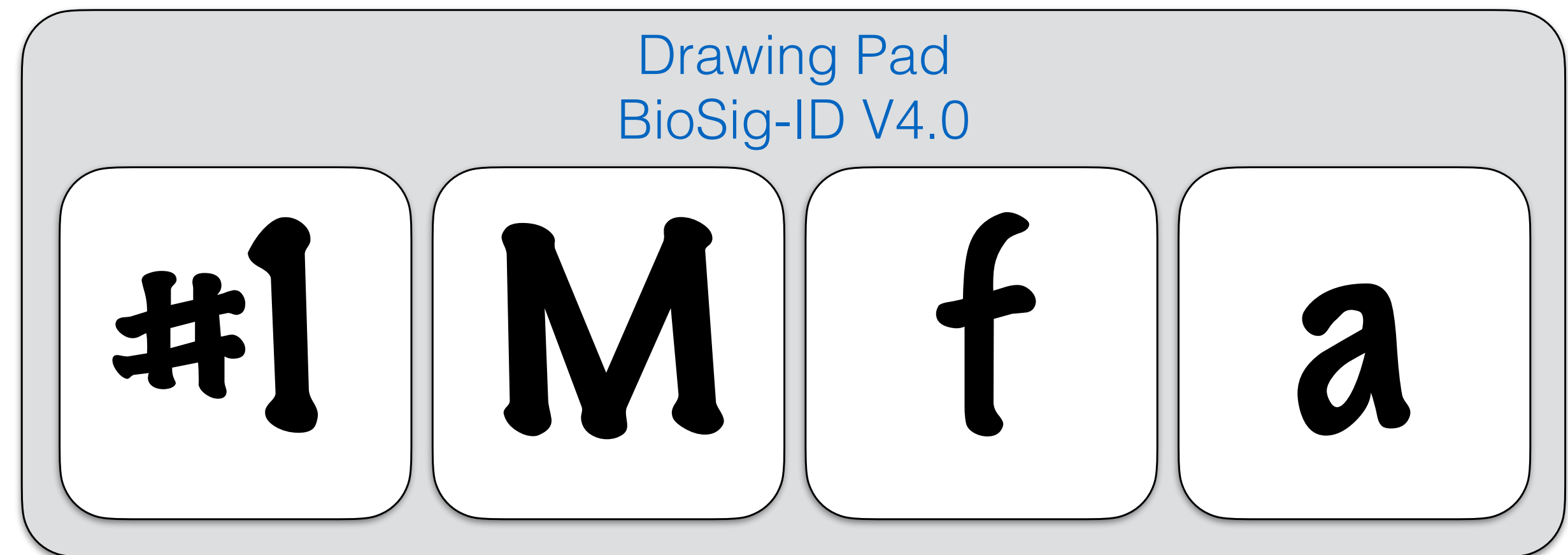
Advanced “Zero Trust” Solutions



BSI - what does it do?

Single action MFA solution that creates credentials that can't be shared, stolen, or replicated by BOTS.

With no training or hardware needed, all users are permanently linked to all actions taken in the LAN.



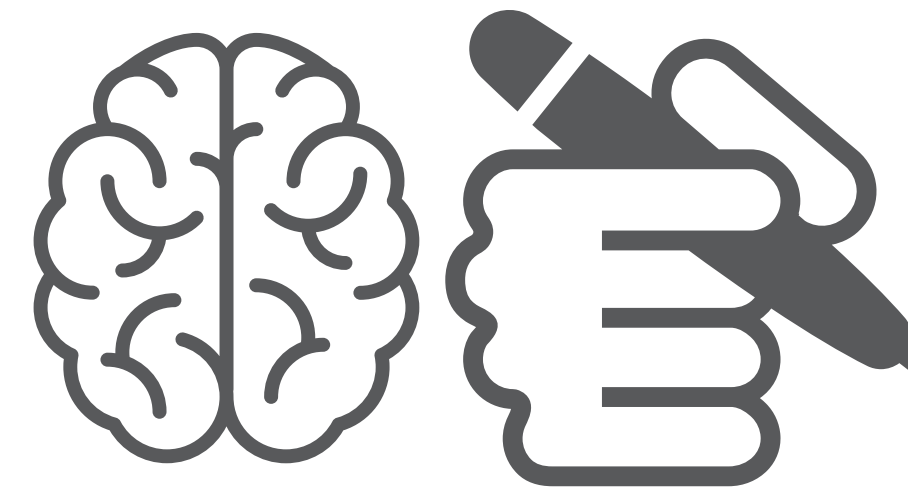
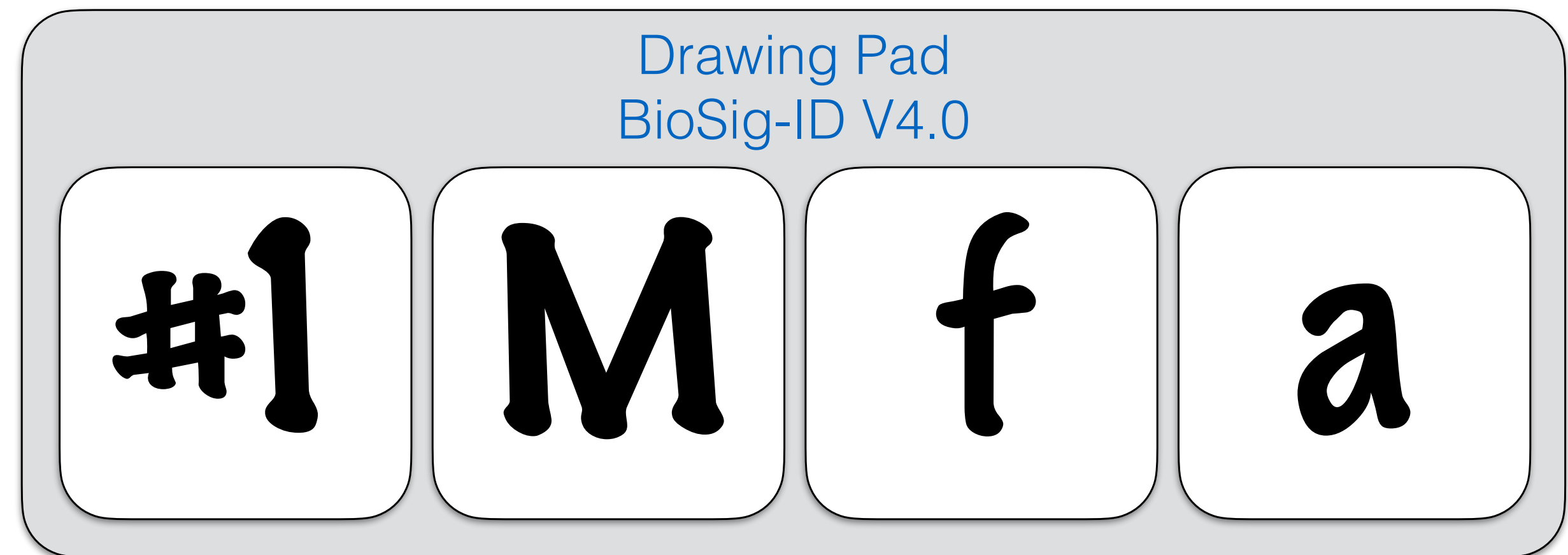
Prevent hackers and BOTs from gaining access into your network by using unbreakable MFA code protocols.

Advanced “Zero Trust” Solutions

BSI - how does it do it?



It analyzes the behavioral patterns and state of mind of the user as they use their finger, mouse or stylus to “draw” their password. Using ML, it accounts for variations over time to provide in excess of 1 trillion to 1 odds of being defeated.



It links written credentials to the user’s state of mind and behavior.



Advanced “Zero Trust” Solutions

BSI - key benefits



1. Prevents impostors from authenticating using stolen or shared credentials; perfectly attributing digital actions to users.
2. Protects the identity of the user, making every digital transaction “blind” to PII and other secure data.
3. Determines the will or capacity to perform functions, by linking to user’s state of mind.
4. Deploys without need for hardware or complex training.

UNDUPLICABLE - UNSHAREABLE - 100% ATRIBUTION



Why TekMasters?



- We make contracting and working with us an easy day. We get the community and we staff from it.
- We take on and quickly solve the difficult challenges that large corporations see as “cash cows.”
- We deliver results, not excuses.



TekMasters

Capabilities Briefing

Ramzy Megally
CEO